

DRESS REGULATIONS - ROYAL MARINES - 1937

The 1908 Equipment illustrated here was in use in the Royal Marines until the new 1937 pattern was introduced about the same time as battledress, early in World War II.

Web Equipment - The inside of flap of haversack and the inside front of cartridge carriers will not be blanched. Web pouches and flaps will be flattened out when wet.

Rifle Sling - End of sling attached to butt swivel will be as close to swivel as brass end will allow.

When the pack is worn the "D's" on the braces will be as close as possible to the shoulder straps on the jacket so as to bring the pack as high as possible.

Rivets between pouches of cartridge carriers, on frog and on entrenching tool carrier will not be polished; they will be blanched in such a manner that they are invisible.

The practice of punching holes in the flaps of the pack and drawing the flaps together with a lace is not permitted.

The waterbottle cork lanyard will be kept clean but will not be blanched white.

The edges of all brasswork, i.e. "D's" and buckles will be rubbed smooth and polished.

Buff Equipment - Both belt and frog will be on the hook on the Tunic. Studs on pouch and frog will be cleaned and free from blanco. Stitching holes will not be pricked out with pencil.

Position of fixed runner on rifle sling:- Top edge of fixed runner will be in line with top edge of magazine (when viewing the rifle at the "order").

Steel Helmet - Buckle of the chin strap will be worn on the left side.

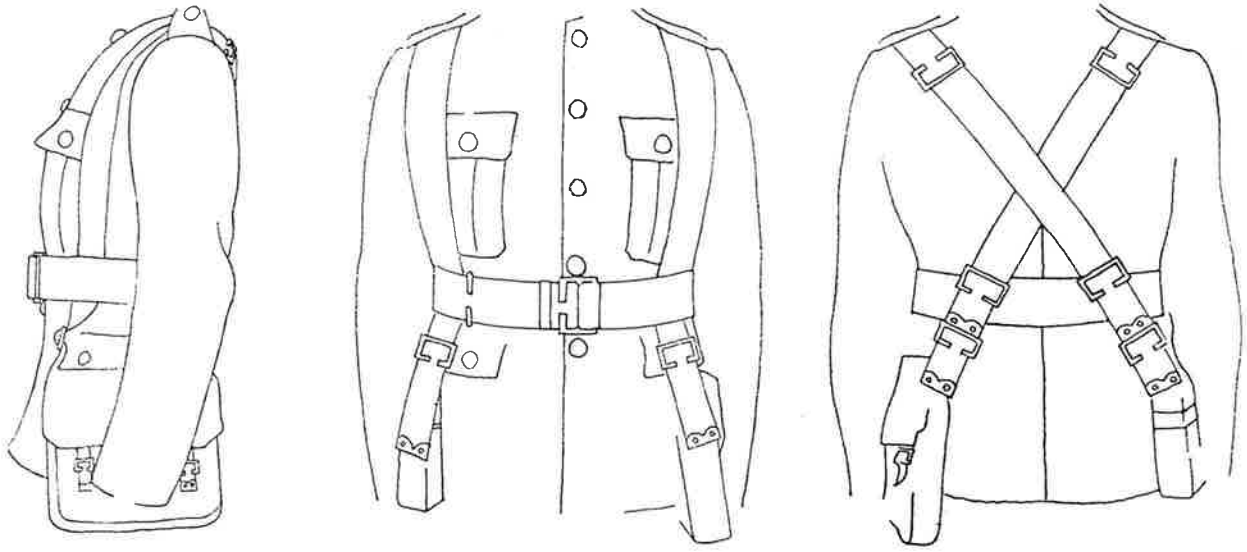
Method of attaching Helmet Bag - Marching Order - When parading for embarkation the helmet bag containing the forage cap will be attached to the supporting strap as close as possible to the left carrier.

Knife Lanyard - The knife lanyard as issued will be worn when parading in marching order. The wearing of the Naval pattern white lanyard is not permitted.

Walking Out Cane - The practice of strapping the walking out cane on the rifle is not permitted.

Sashes - Will be worn in Nos 1, 2, 6 and 7 dress. When worn with the Cloth Tunic, the sash will be fitted under the second button covering the third and fourth buttons. When worn with the Serge Tunic the Sash will cover the second button. It will not be worn outside the greatcoat when on leave. When wearing a sash with a greatcoat, Staff Sergeants will wear it underneath the coat.

Method of Wearing Marching Order—R.M. Band.

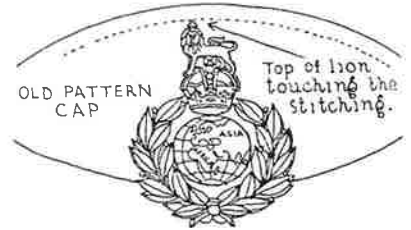
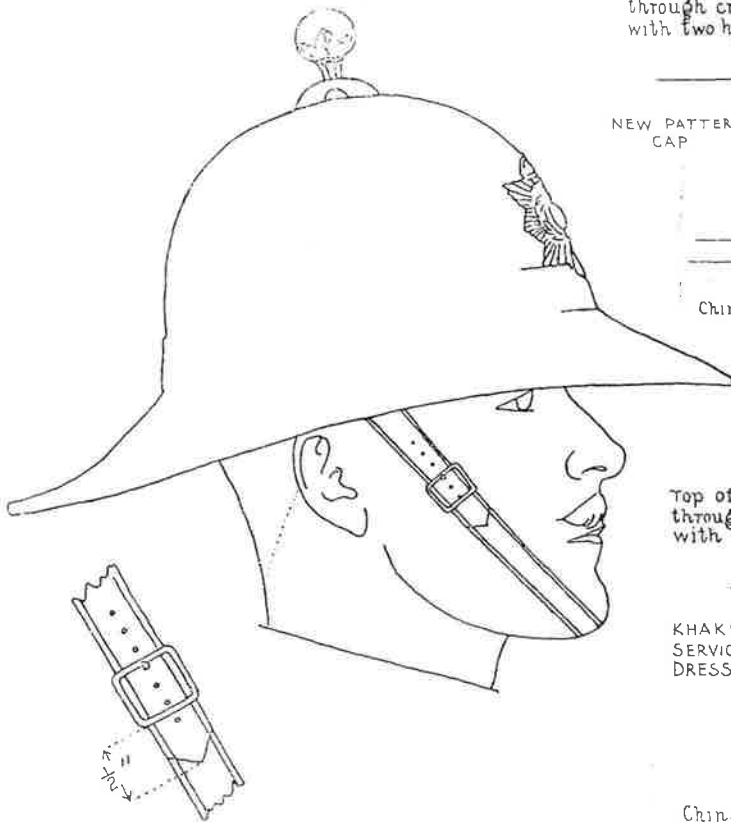


Note.—Braces are not to be crossed in front of the body. They should pass under the waistbelt, the ends being attached to the waterbottle and haversack respectively.

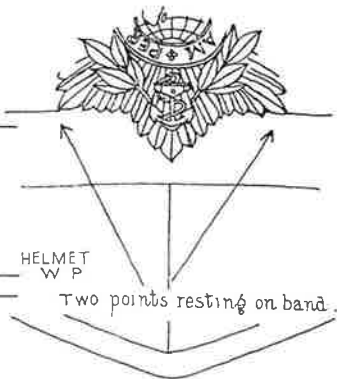
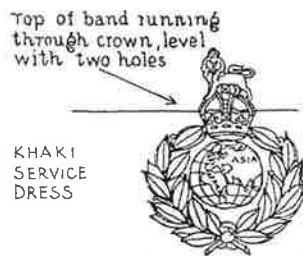
Method of Wearing Chinstrap on Helmet, W.P.

Buckle will be worn on right cheek bone. Spare end of chinstrap will be half an inch in length and pointed.

Position of Cap Badge and Helmet Plate.

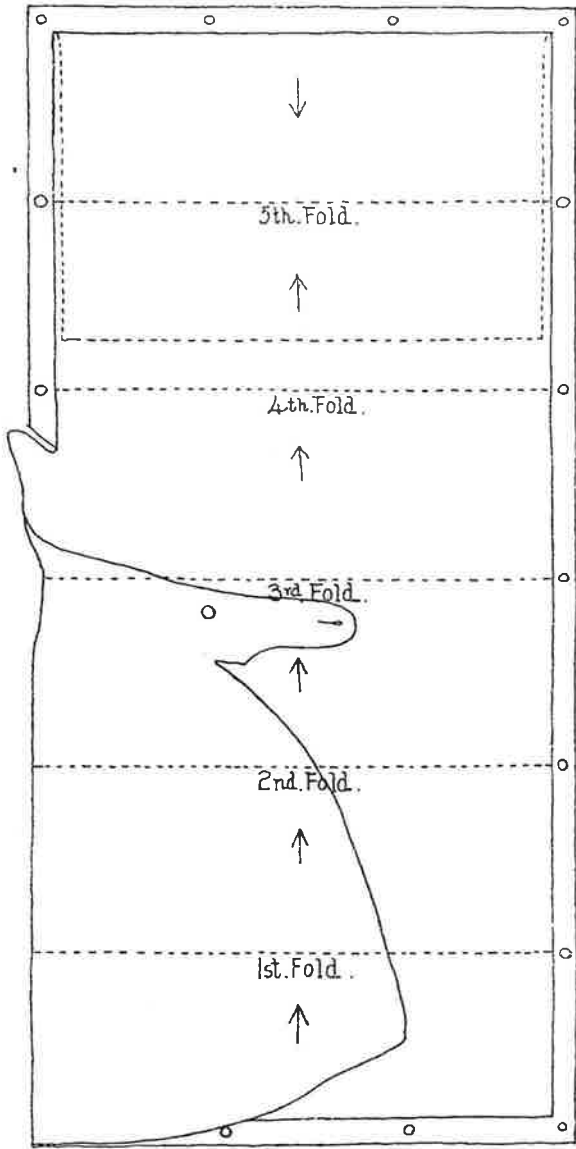


Chinstrap resting on peak.

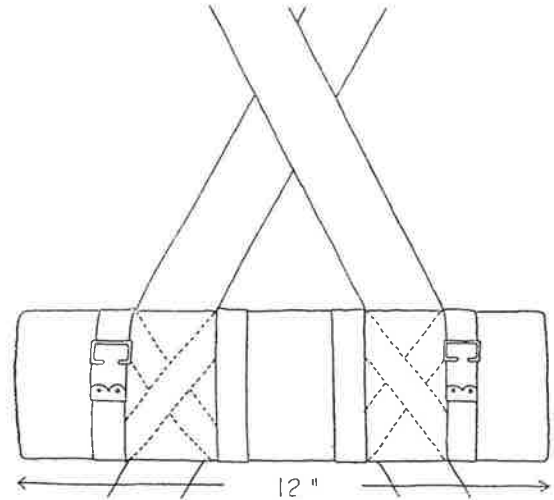


Chinstrap resting on peak.

II.—Method of folding Waterproof Sheet.



III.—Method of Attaching Waterproof Sheet to Web Belt.



Start with the supporting strap on the outside of the sheet, buckle on top and on the outer side of the brace. Bind sheet to the belt by passing strap downwards on the outside and upward on the inside of the belt and brace; then downward on the outside of belt and inside of brace, and then crossing at the back of belt to top of brace and buckle ends together.

IV.—Method of Wearing Haversack.



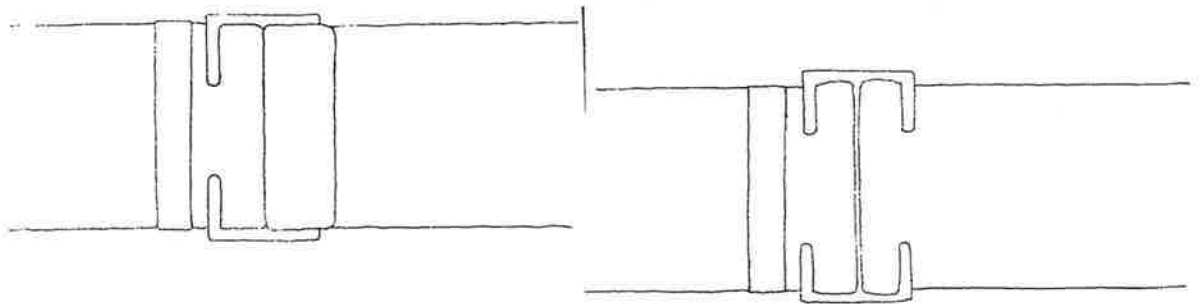
Top of haversack in line with cross-piece of bayonet.

WATERPROOF SHEET WILL BE FOLDED AS FOLLOWS:—Neck and triangular portion folded in. Commencing from the double end, sheet will be folded in five folds, lace hole to lace hole, the fifth fold being folded back across the fourth, about three parts of the way in, so that when folded, two edges only show.

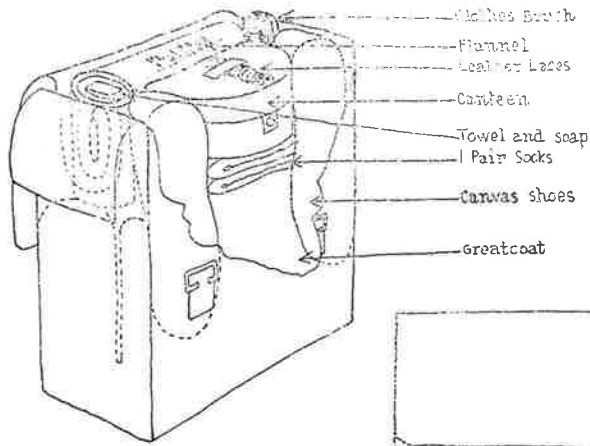
TO ATTACH TO WAISTBELT.—Roll sheet and attach as shown in Diagram III.

VII.—Method of Fastening Web Belt.

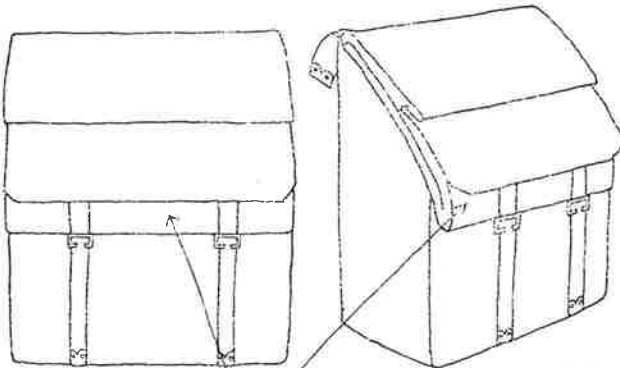
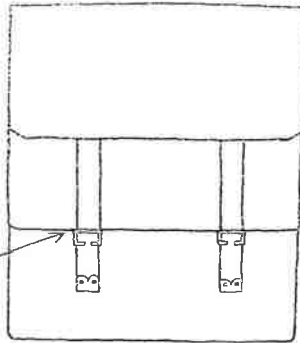
1. WHEN SIDE ARMS ARE WORN.—As for drill order, *i.e.*, belt curled on buckle.



VI.—Method of Packing and Assembling Pack.



Bottom edge of Waterproof Sheet in line with top edge of 'D's'

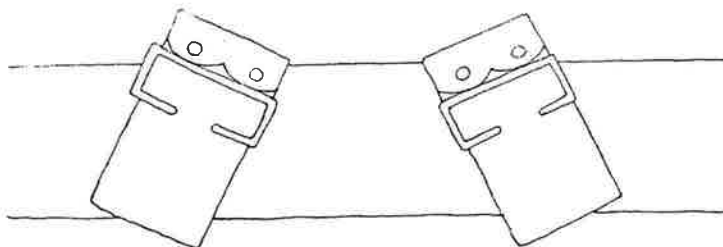


waterproof sheet

When Greatcoat is not carried in pack, the bottoms of the brass tabs will be in line with the bottom of the pack, and the flap of the pack will be folded over.

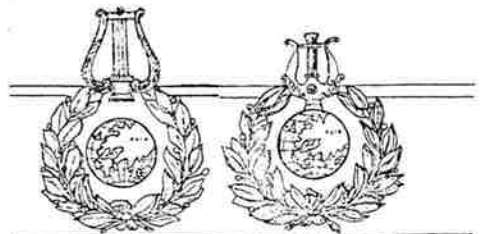


2. WHEN SIDE ARMS ARE *not* WORN.—Pass end through open part of buckle and then through centre opening to the left, inside belt.



Brass tabs on rear of waist belt will be close to "D's."

AMENDMENT No. 1
Add:— to cap badges

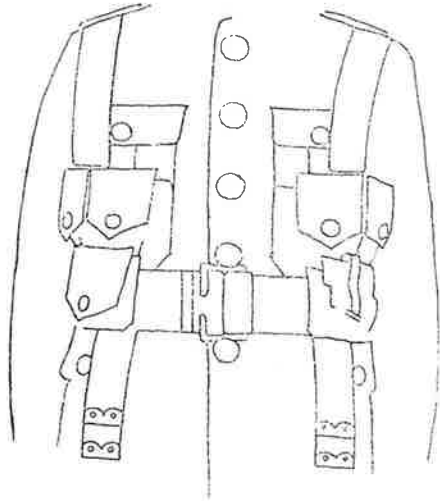


OLD PATTERN NEW PATTERN

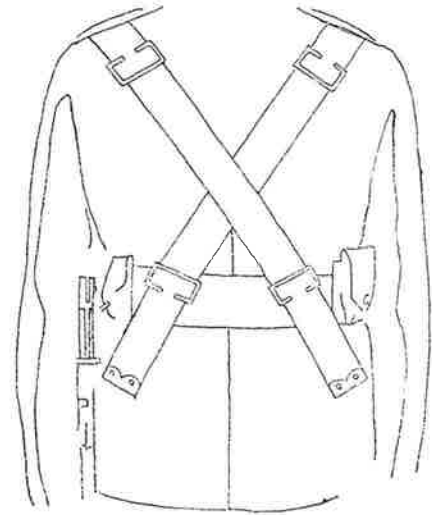
NOTE.—Top edge of laurels to be in line with upper welt of red band.

(R.M. No. 1202/37.Q—4/5/37.)

Method of Wearing Drill Order.



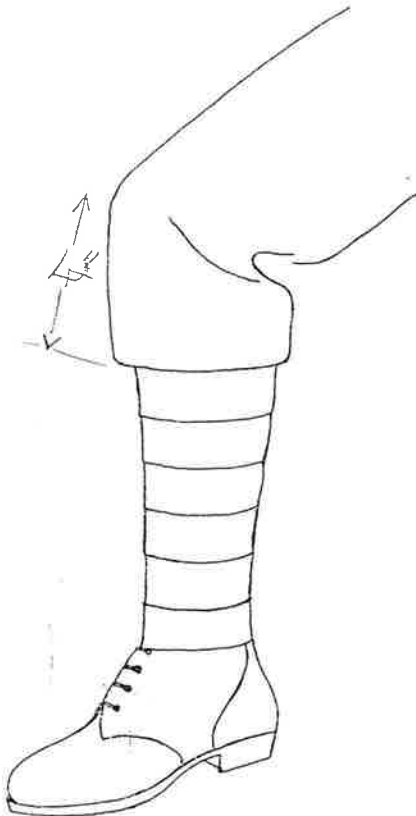
1. Braces in rear of breast pocket buttons, but as close to them as possible.
2. Buckle of belt in centre of fourth and fifth buttons (both buttons showing).
3. Belt fitted on the hooks of tunic. This prevents the weight of the bayonet pulling down on the left side.
4. Curl at buckle of belt to be tight.



1. Braces crossed left over right.
2. "D's" two inches from rear edge of shoulder strap.
3. Ends of braces in line at the bottom with straps on the belt.
4. Belt reasonably tight and on hooks of tunic.

Method of wearing khaki service dress trousers with puttees.

1. The trousers will be creased four inches below the knee, care being taken that they are level with each other.
2. Fourth bootlace will be just visible.



Method of Wearing Waterbottle.

Front attachment of waterbottle will be back between the two straps which attach the right cartridge carrier to the belt. "D" of front attachment will be close down on brass tab of brace. "D" of rear attachment will be close up to "D" on waistbelt. Strap of waterbottle carrier will be in rear of cork. Cork lanyard will be of the type as issued. It will not be plated, and will be attached to the cork with a plain knot.

